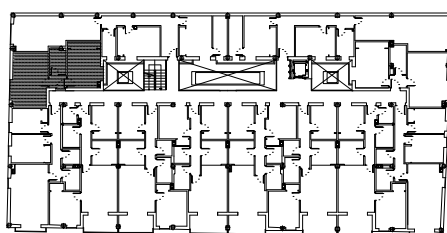


PLANTA PRIMERA



VIVIENDA 1-5

SUPERFICIES ÚTILES			SUPERFICIES CONSTRUIDAS				
VIVIENDA	TERRAZA	TOTAL	VIVIENDA	TERRAZA	TOTAL	P.P.Z.C	TOTAL
39.30 M2		39.30 M2	44.95 M2		44.95 M2	4.90 M2	49.85 M2