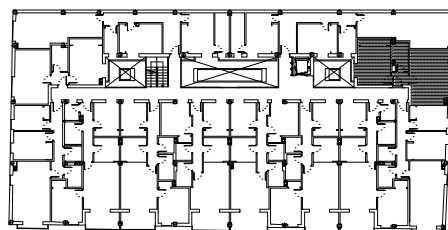


PLANTA PRIMERA



VIVIENDA 1-8

SUPERFICIES ÚTILES			SUPERFICIES CONSTRUIDAS				
VIVIENDA	TERRAZA	TOTAL	VIVIENDA	TERRAZA	TOTAL	P.P.Z.C	TOTAL
41.83 M2		41.83 M2	47.57 M2		47.57 M2	5.19 M2	52.76 M2