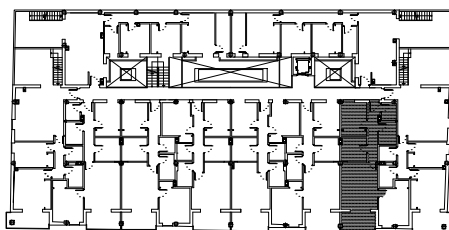


PLANTA SEGUNDA



VIVIENDA 2-8

SUPERFICIES ÚTILES			SUPERFICIES CONSTRUIDAS				
VIVIENDA	TERRAZA	TOTAL	VIVIENDA	TERRAZA	TOTAL	P.P.Z.C	TOTAL
55.80 M2	6.55 M2	62.35 M2	64.04 M2		64.04 M2	6.99 M2	71.03 M2