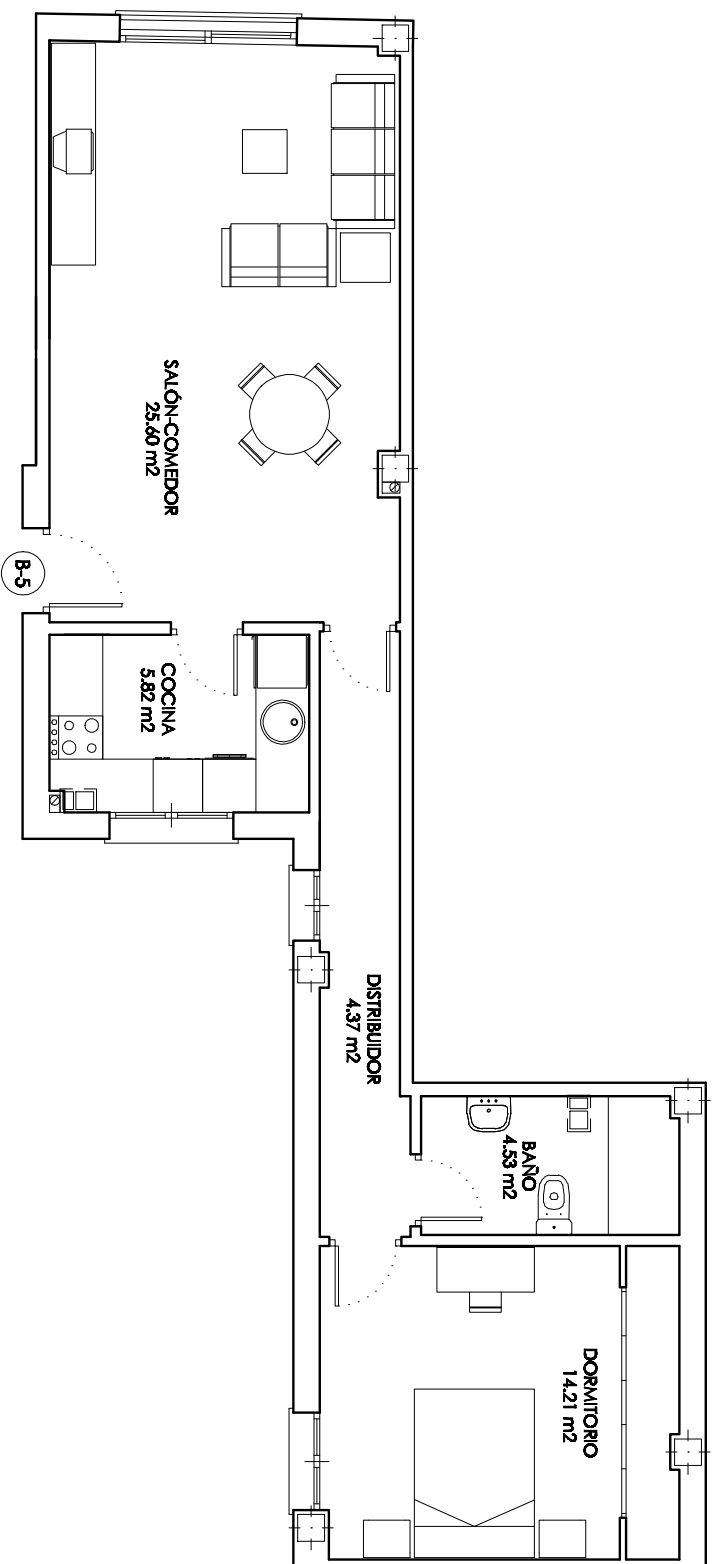


PLANTA BAJA



VIVIENDA B-5

SUPERFICIES ÚTILES			SUPERFICIES CONSTRUIDAS				
VIVIENDA	TERRAZA	TOTAL	VIVIENDA	TERRAZA	TOTAL	P.P.Z.C	TOTAL
56.88 M ²		56.88 M ²	66.17 M ²		66.17 M ²	7.22 M ²	73.39 M ²

