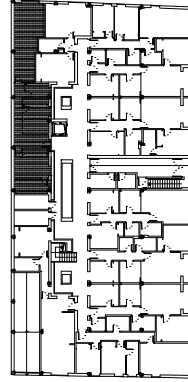
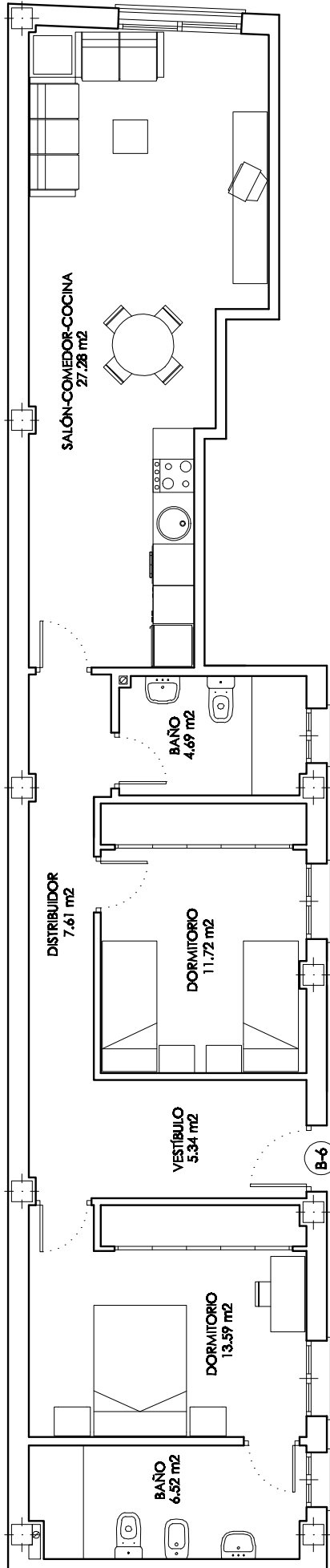


PLANTA BAJA



VIVIENDA B-6

SUPERFICIES ÚTILES		SUPERFICIES CONSTRUIDAS		
VIVIENDA	TERRAZA	TOTAL	TERRAZA	TOTAL
76.75 M2	75.76 M2	90.55 M2	90.55 M2	100.43 M2
			P.P.Z.C	
			9.88 M2	