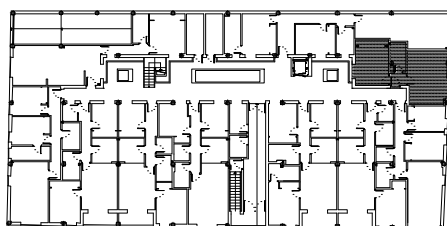


PLANTA BAJA



VIVIENDA B-7

SUPERFICIES ÚTILES			SUPERFICIES CONSTRUIDAS				
VIVIENDA	TERRAZA	TOTAL	VIVIENDA	TERRAZA	TOTAL	P.P.Z.C	TOTAL
41.94 M2		41.92 M2	47.53 M2		47.53 M2	5.19 M2	52.72 M2