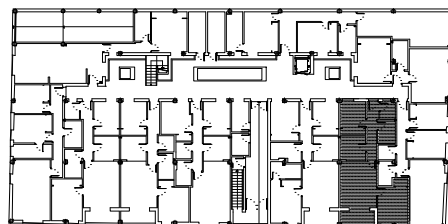


PLANTA BAJA



VIVIENDA B-9

SUPERFICIES ÚTILES			SUPERFICIES CONSTRUIDAS				
VIVIENDA	TERRAZA	TOTAL	VIVIENDA	TERRAZA	TOTAL	P.P.Z.C	TOTAL
56,05 M <sup>2</sup>	4,84 M <sup>2</sup>	60,89 M <sup>2</sup>	63,67 M <sup>2</sup>	5,54 M <sup>2</sup>	69,20 M <sup>2</sup>	7,55 M <sup>2</sup>	76,75 M <sup>2</sup>